

**Boys Restroom**

771

175

**Girls Restroom**

**Print in color**

PHASE III

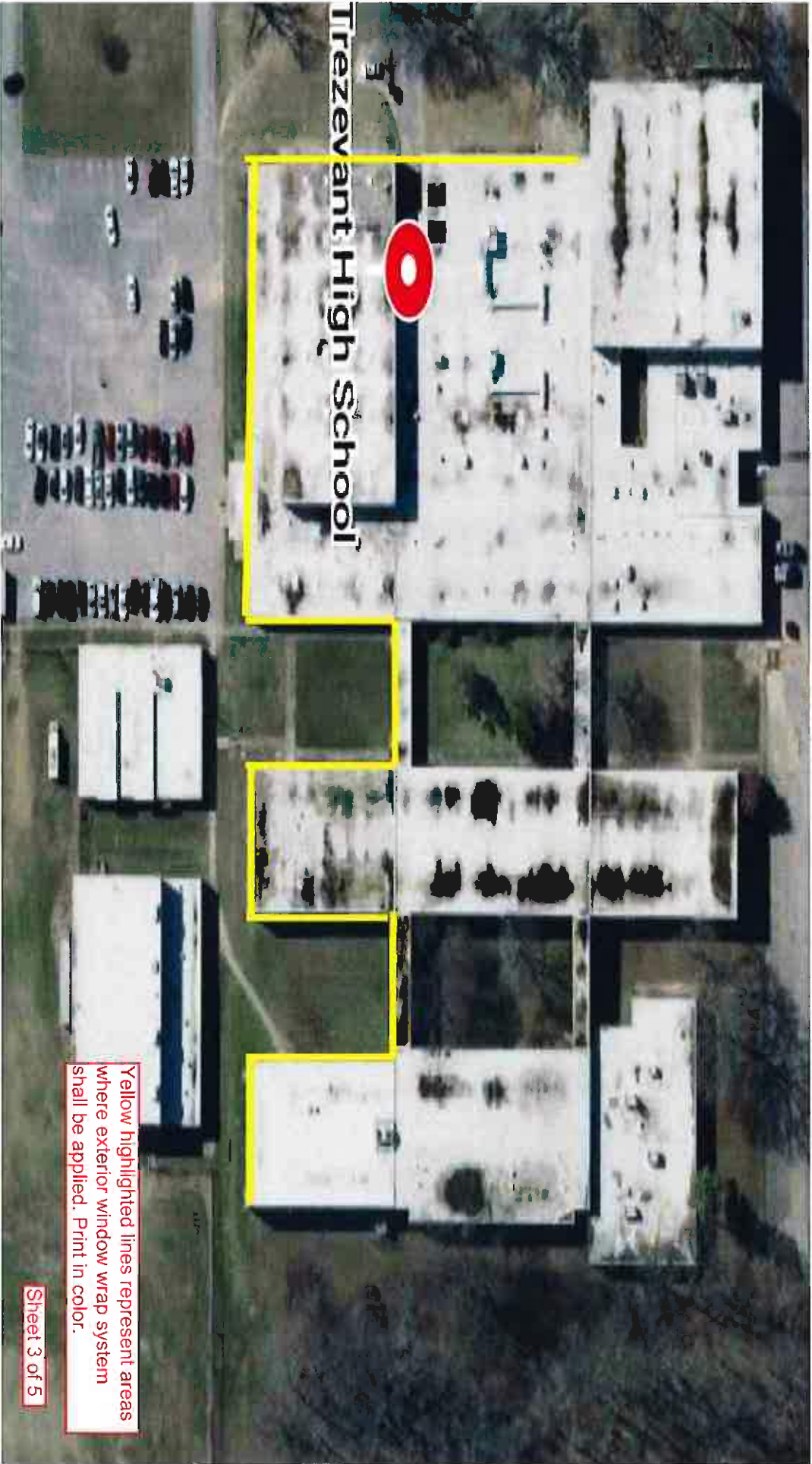
**Trezevant 9th  
Grade Academy  
First Floor  
Sheet 1 of 5**

MASTER

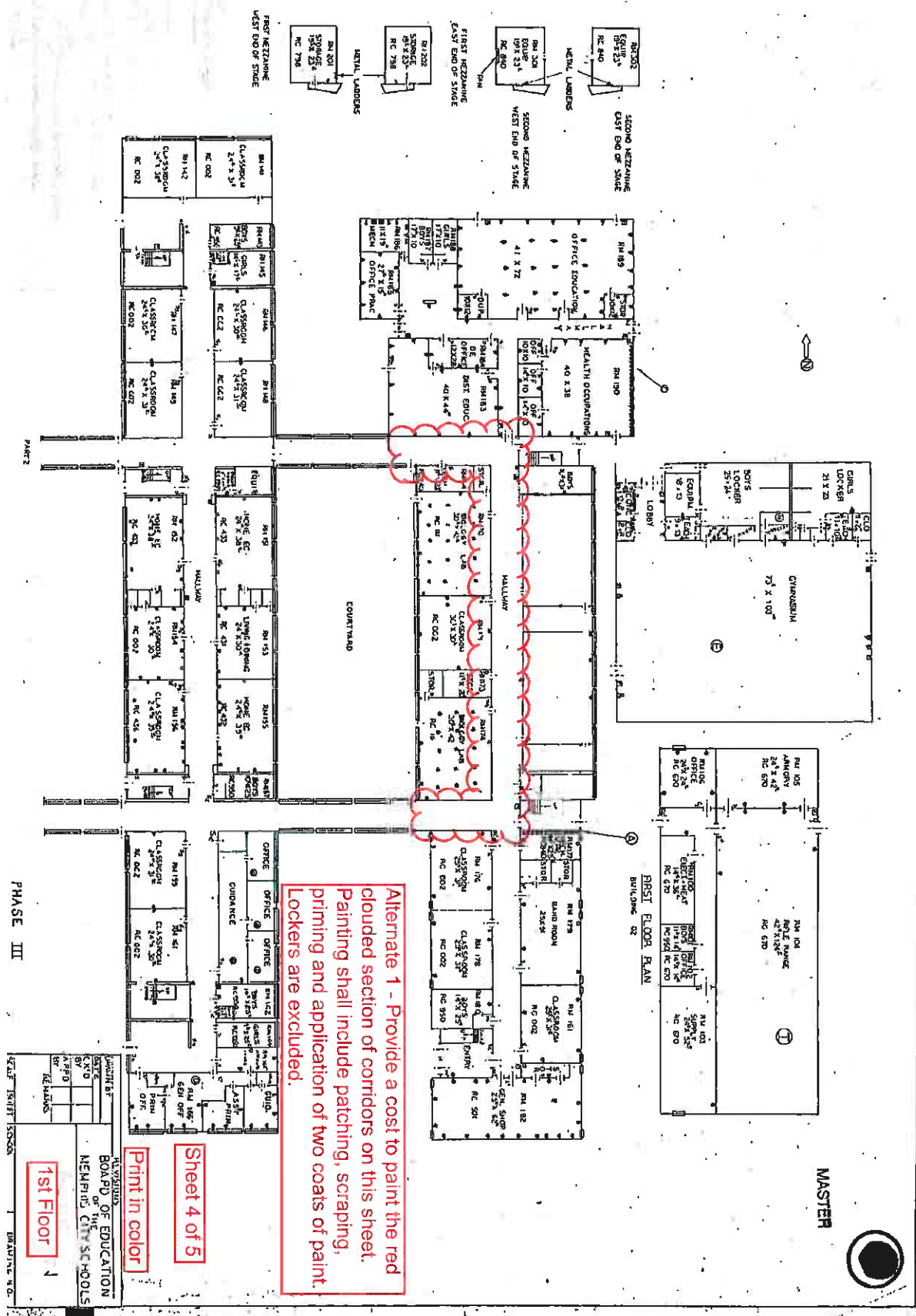


DATE	BY	REVISIONS





Yellow highlighted lines represent areas where exterior window wrap system shall be applied. Print in color.



Alternate 1 - Provide a cost to paint the red clouded section of corridors on this sheet. Painting shall include patching, scraping, priming and application of two coats of paint. Lockers are excluded.

Sheet 4 of 5

Print in color

MEMPHIS BOARD OF EDUCATION  
MEMPHIS CITY SCHOOLS  
1st Floor

DATE	10/17/11	SCALE	AS SHOWN
BY	DE HANSEN	CHECKED	
DATE	10/17/11	SCALE	AS SHOWN
BY	DE HANSEN	CHECKED	



